

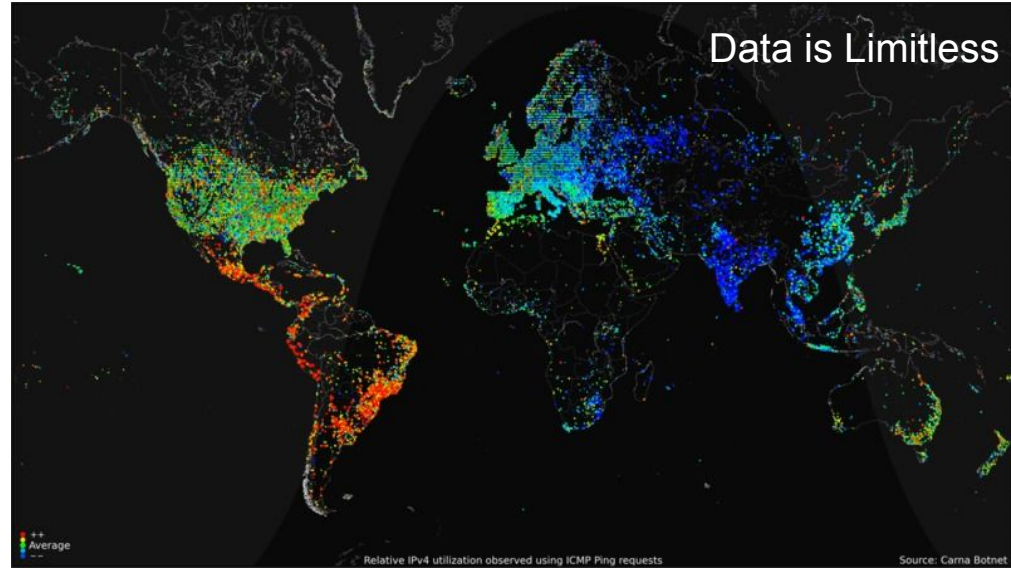
# Advancing the Development of a Transportation Data Hub for Ghana

**Dan P. Seedah, Ph.D., P.E.**

**GIC 2020, August 11 - 14, 2020**

# RECAP

- Data Hub Definition
- Data Lifecycle
- Types of Transportation Data
- Requirements for a Successful Data Hub



# Data Hub Definition

A collection of data from multiple sources organized for distribution and sharing



# Why a Data Hub?

- Data reuse
- Decision-making
- Education
- Generate subject area interest
- Serve as a reference
- Data archiving



Source: Pixabay

# Types of Transportation Data



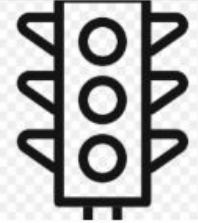
**Bridge and Structures**



**Energy and Environment**



**Infrastructure Assets**



**Traffic Operations**



**Planning and Land Use**



**Safety**



**Trade and Economics**

# Requirements for a Successful Data Hub



**Institutional Commitment**



**Human Resource**



**Technological Infrastructure**



**Funding**

# Requirements for a Successful Data Hub



**Institutional Commitment**



**Human Resource**



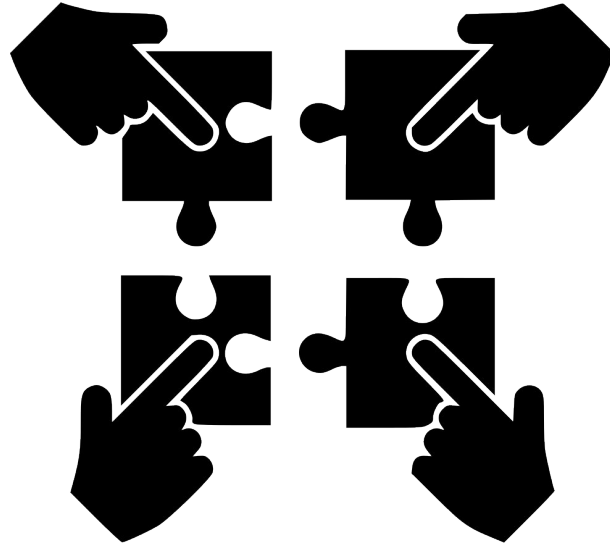
**Technological Infrastructure**



**Funding**

# UPDATE: Technological Infrastructure

- Collaborative
- Budget-Friendly
- Ease of use
- Easy Maintenance
- Frequent Updates
- Flexibility





# Data Hub Highlight: Bridges

Geographical Location ✓

Roadway Name ✓

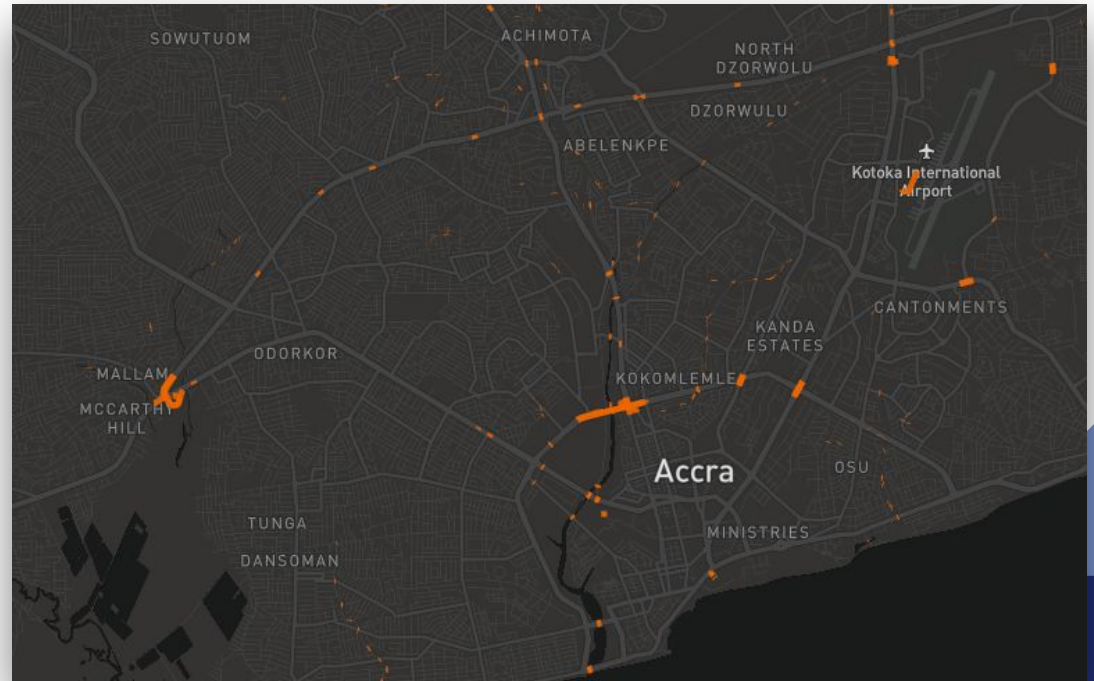
Bridge Condition

Vertical Clearance

Bridge Age

Bridge Deck Area

...



# Data Hub Highlight: Planning & Land Use

Land use type ✓

Geographical location ✓

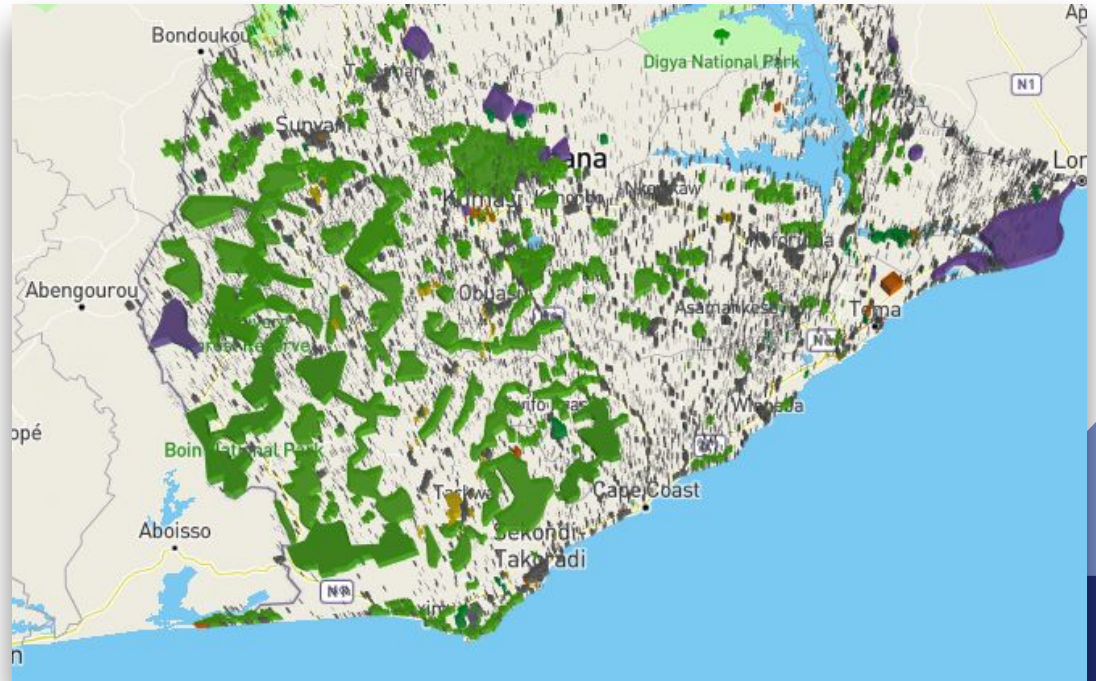
Trip generation/demand

Parcels and tracts

Right-of-Way

Town/city boundaries

...



# Data Hub Highlight: Safety

Annual Statistics ✓

Casualties ✓

Weather Condition ✓

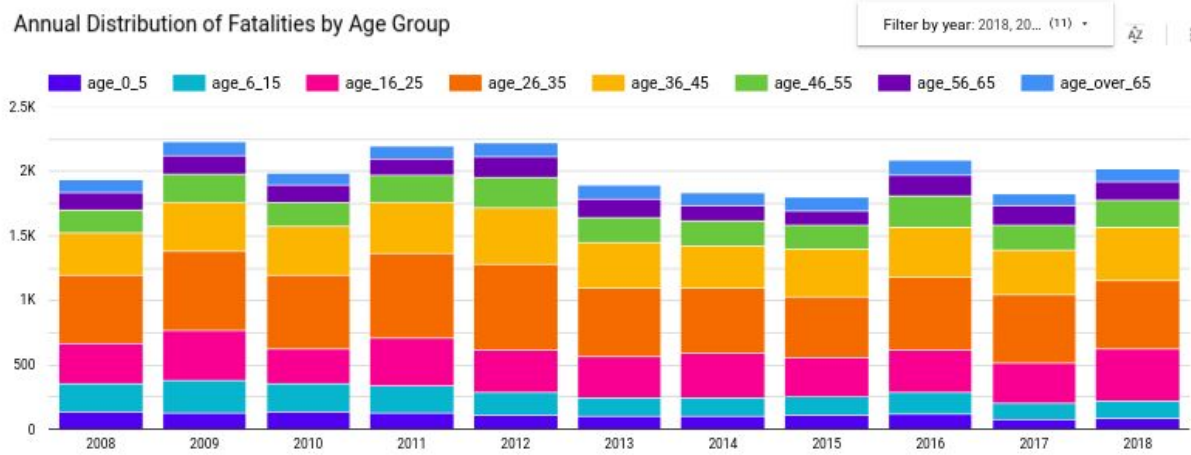
Road Description ✓

Driver Error ✓

Accident Description ✓

Latitude/Longitude

Annual Distribution of Fatalities by Age Group



# Data Hub Highlight: Trade and Economics

Imports ✓

Exports ✓

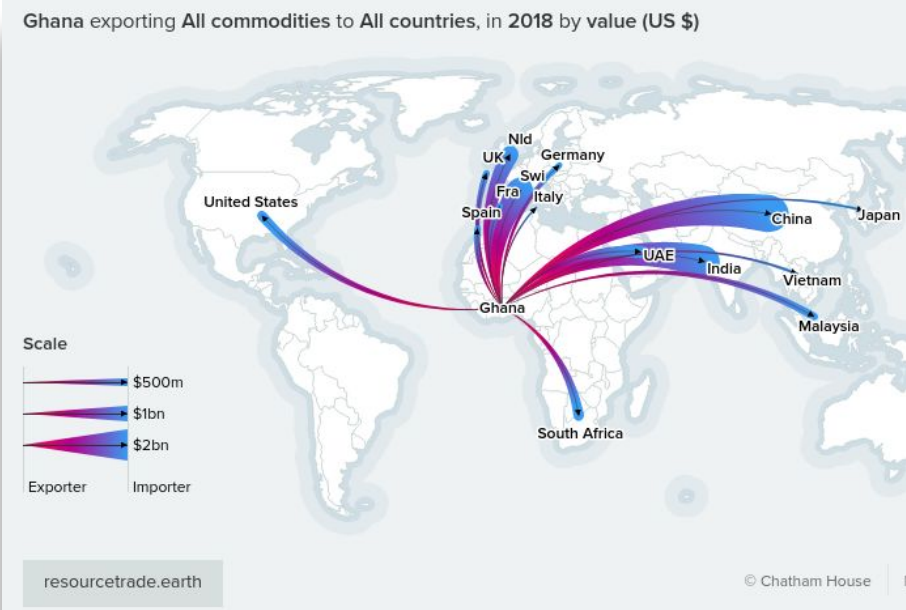
Value ✓

Quantity ✓

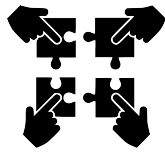
Truck Trips

Freight Trip Generators

...



# Next Step: **COLLABORATION!!!**



**Institutional Commitment**



**Human Resource**



**Technological Infrastructure**



**Funding**